

PSE 20N 21N 22N

**Automated operator
for rolling shutters,
for residential
and industrial areas.**

230V

Suitable for existing or brand new shutters.

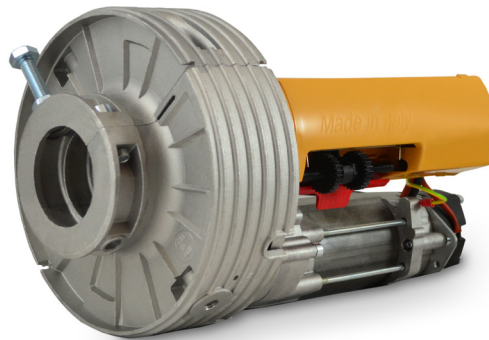
Built-in limit switches, to ensure easier safe regulation in opening and closing.

Available in reversible or locked version, featuring electro-break and release system for manual operation.

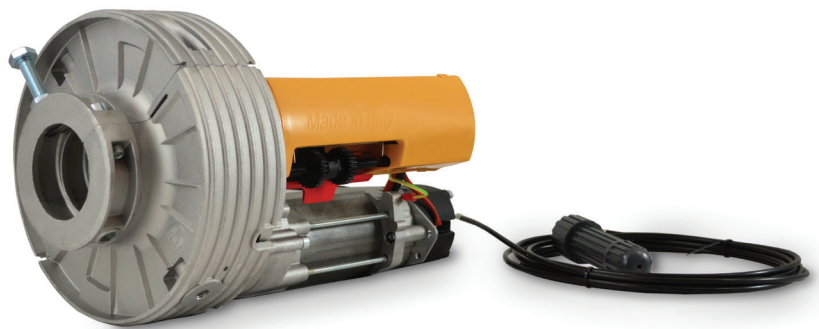
Transmission gear accessories and spring pulley adapters included.

For big shutters dual-motor operator available.

PSE20N



PSE21N



PSE22N



ROLLING SHUTTER Automation



Made in Italy



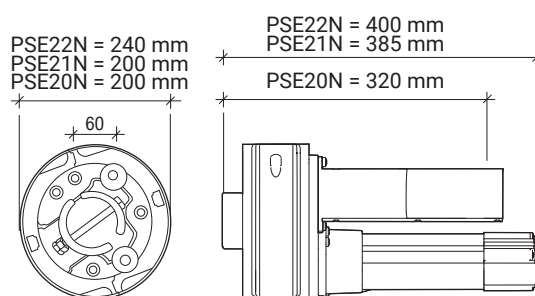
	Power supply	Version	Ø Shaft	Ø Spring-pulley	Max. Load
PSE20N	230V	reversible	60-48 mm	200-220 mm	170 Kg
PSE21N	230V	locked	60-48 mm	200-220 mm	170 Kg
PSE22N	230V	locked dual motor	100-76 mm	240 mm	360 Kg



TECHNICAL FEATURES

	PSE20N	PSE21N	PSE22N
Power supply	230V 50/60 Hz	230V 50/60 Hz	230V 50/60 Hz
Current	2.6 A	2.6 A	5.4 A
Motor power	600 W	600 W	1340 W
Thrust	170 Nm	170 Nm	360 Nm
Pulley speed	10 rpm	9 rpm	8 rpm
Max load	170 Kg	170 Kg	360 Kg
Max stroke	6 m	6 m	6 m
Drive-shaft diameter	60/48 mm	60/48 mm	76 mm
Spring-holder pulley	200/220 mm	200/220 mm	240 mm
Duty cycle	30%	30%	30%

DIMENSIONS



OPTIONAL ACCESSORIES



LUCE
LED 24V
flashing light



RF40
Photocell
set



IKON
4-ch remote
control



RT37
Wireless
keypads



RS15
Key switch

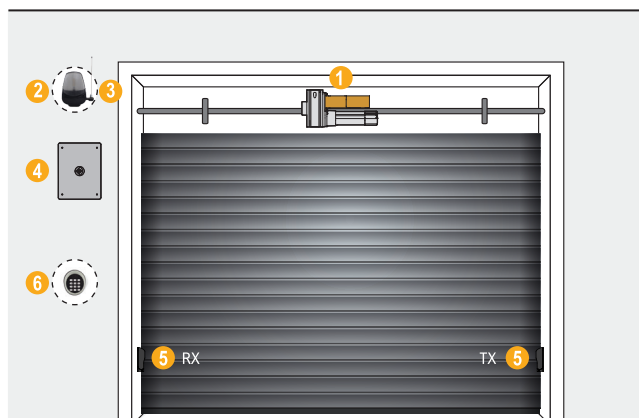


RT26
Secure lock box featuring
release device for manual
operation



Q46
Control board
230V
for shutters

INSTALLATION MAP



- 1_Automated operator
- 2_Flashing light
- 3_Outstanding antenna
- 4_Control board
- 5_Outer photocell
- 6_Wireless keypads